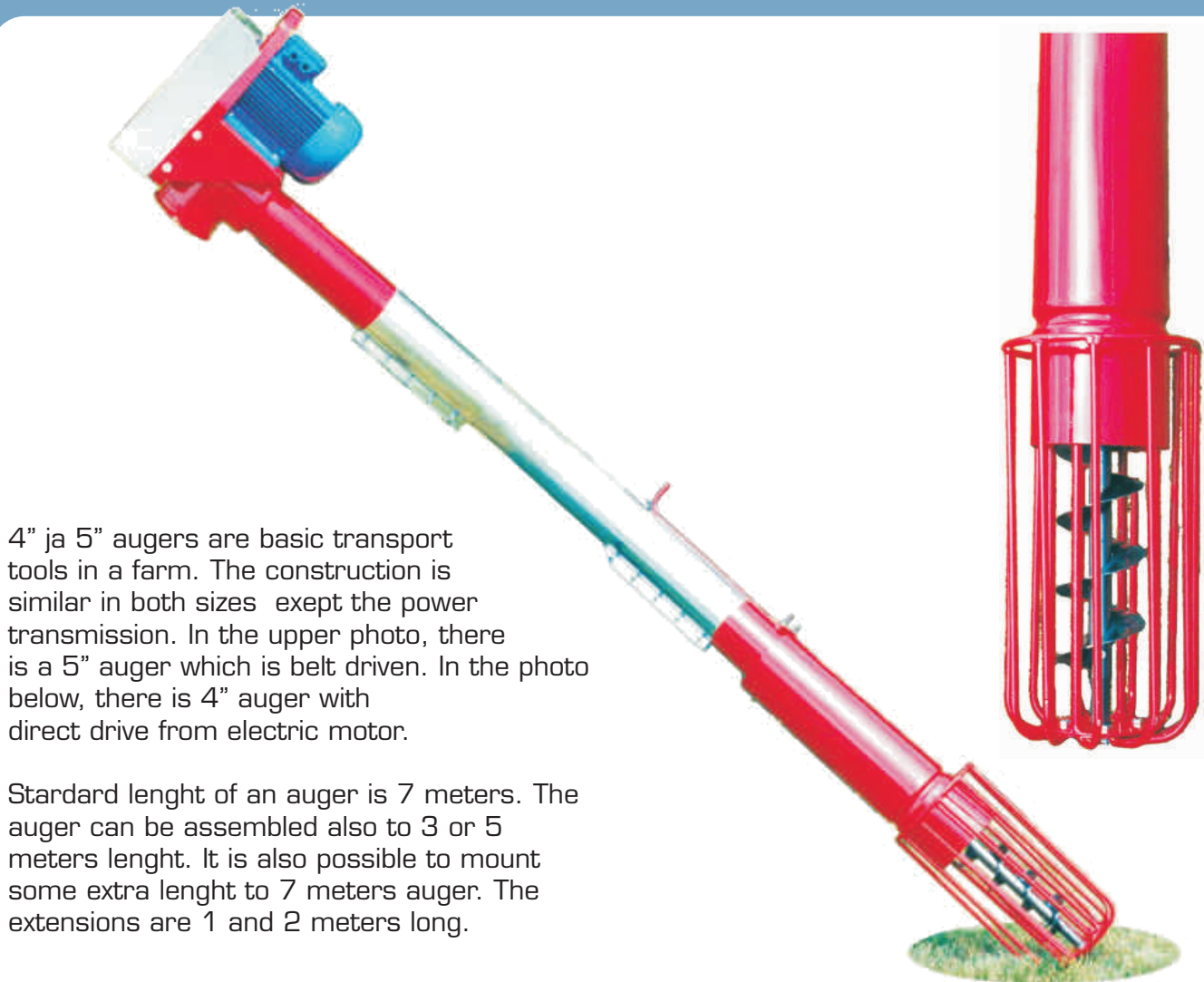


TUHTI

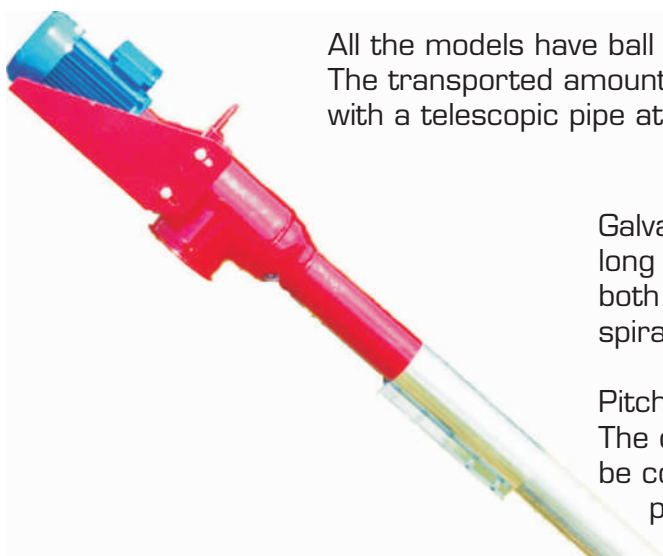
SCREW CONVEYORS

4" and 5" SCREW CONVEYORS



4" ja 5" augers are basic transport tools in a farm. The construction is similar in both sizes except the power transmission. In the upper photo, there is a 5" auger which is belt driven. In the photo below, there is 4" auger with direct drive from electric motor.

Standard length of an auger is 7 meters. The auger can be assembled also to 3 or 5 meters length. It is also possible to mount some extra length to 7 meters auger. The extensions are 1 and 2 meters long.



All the models have ball bearings at both ends. The transported amount of grain can be adjusted with a telescopic pipe at bottom end.

Galvanized pipes are connected to each other with a long clamp. The construction of the rear end is similar in both sizes. There is protective cage around the open spiral.

Pitch of the spiral at the beginning is little smaller. The diameter of discharge is 160 mm. Steel pipes can be connected with a special clamps to the discharge port.



The discharge opening is \varnothing 160 mm in all models. Steel pipes can be connected with a special quick release clamp.



The pitch of the spiral is smaller at the beginning.

SIZES OF MOTORS

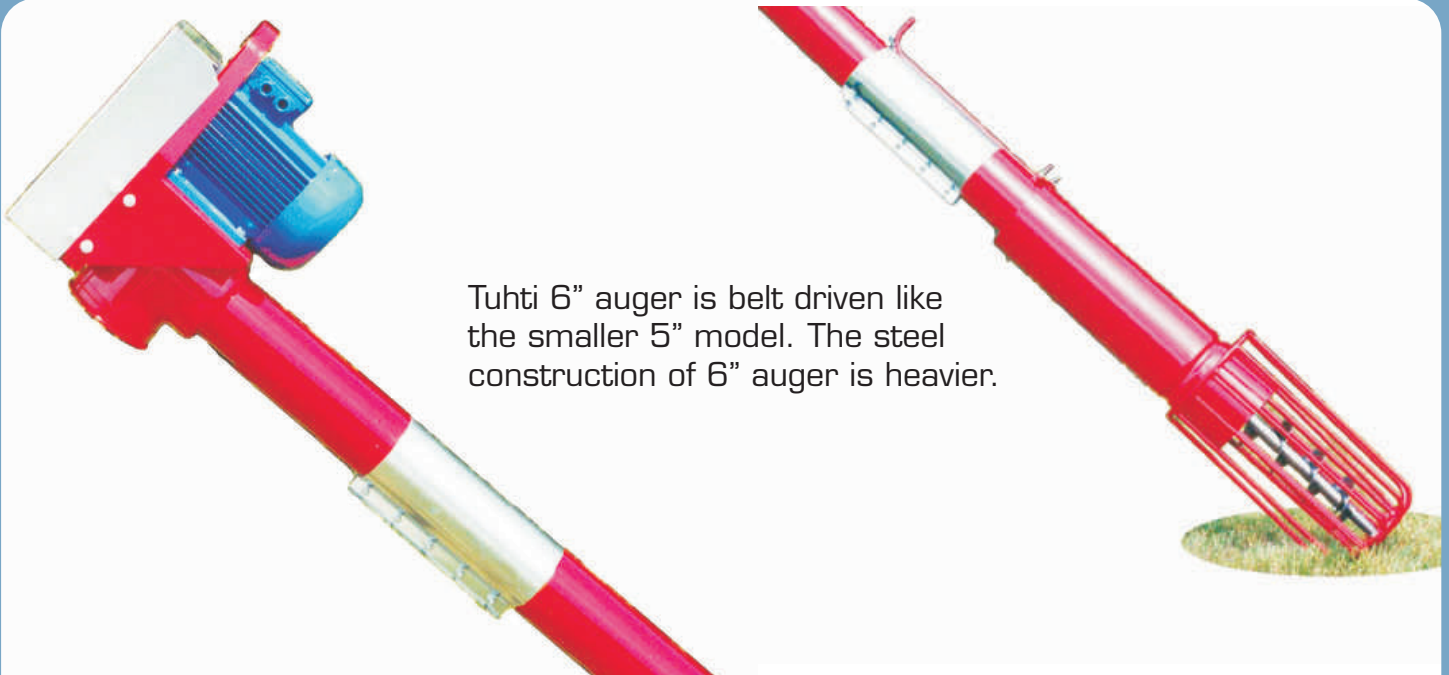
	length of the auger											
	4	5	6	7	8	9	10	11	12			
Tuhti 4"	1,5kW			2,2kW			3,0kW					
Tuhti 5"	2,2kW			3,0kW			4,0kW					
Tuhti 6"	4,0kW						5,5kW					

All the models has been constructed for normal (B3) electric motors having 1500 rpm speed of rotation. If the auger is ordered without the motor, the size of the motor should be mentioned in the order, because the connecting parts for each size of motors may vary. If the size of the motor is not mentioned, we supply suitable connecting parts for an auger of 7 meters.

If the auger will be started being full of grain, the maximum lengths for each size of motors are little shorter.

The power consumption of the auger is bigger at lower elevation angles, because the transported amount of grain is higher.

6" SCREW CONVEYOR



Tuhti 6" auger is belt driven like the smaller 5" model. The steel construction of 6" auger is heavier.

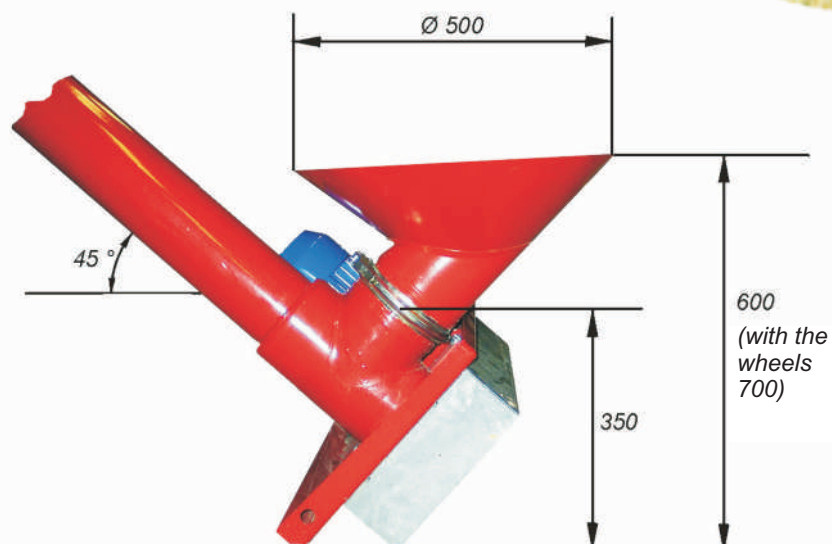
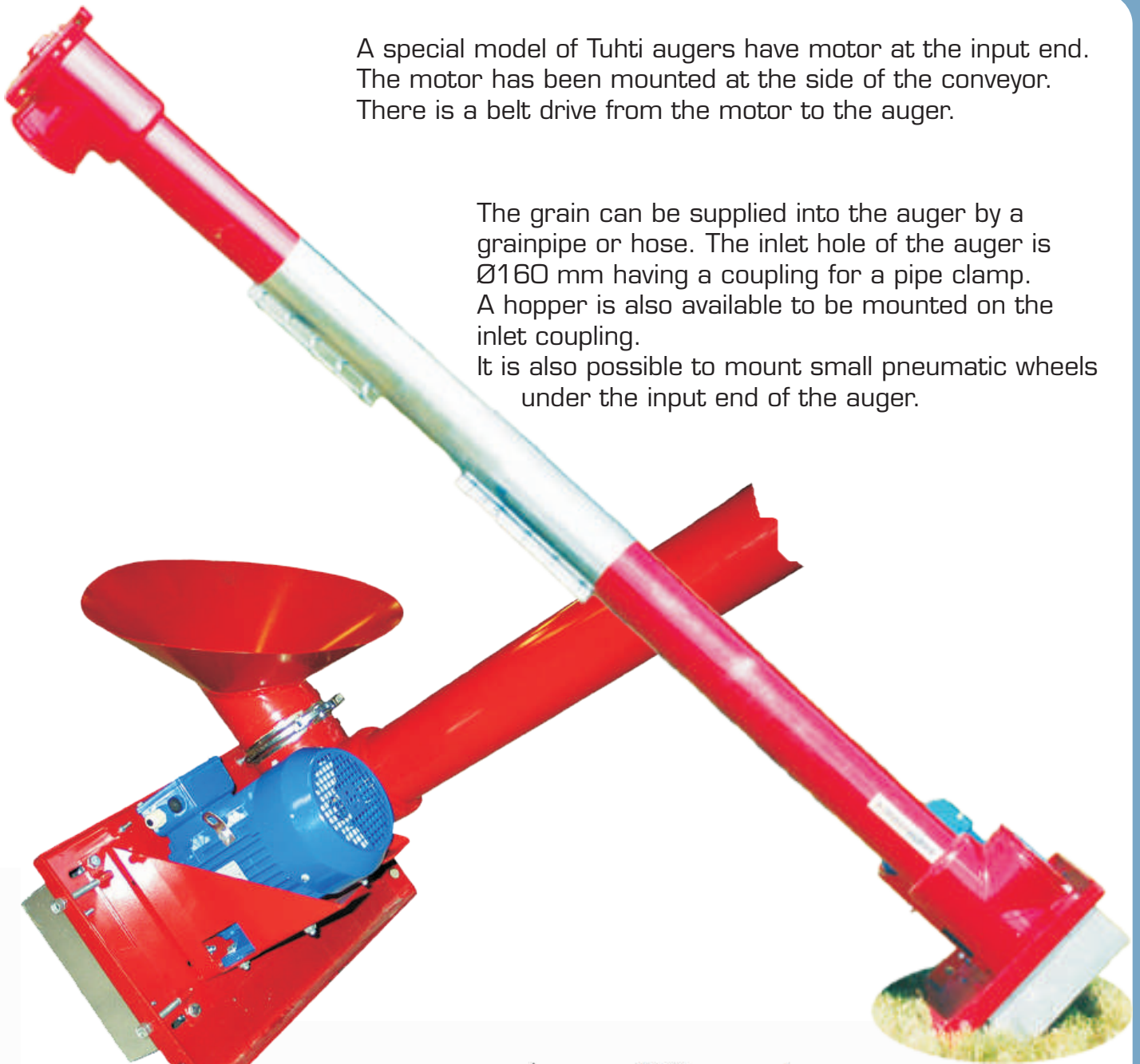
The wall thickness of the steel pipe of 6"auger is 3 mm. It is quite heavy and it is not meaned to be transported from one place to another. The standard lenght is 7 meters. Extensions of 1 and 2 meters are available.

SCREW CONVEYORS WITH INPUT END DRIVE

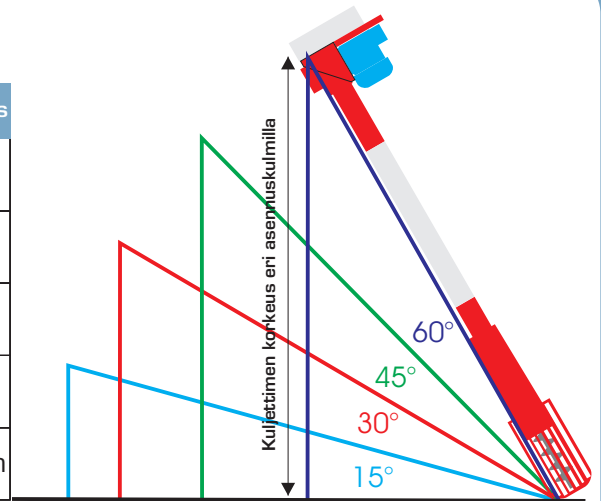
A special model of Tuhti augers have motor at the input end. The motor has been mounted at the side of the conveyor. There is a belt drive from the motor to the auger.

The grain can be supplied into the auger by a grainpipe or hose. The inlet hole of the auger is $\text{Ø}160$ mm having a coupling for a pipe clamp. A hopper is also available to be mounted on the inlet coupling.

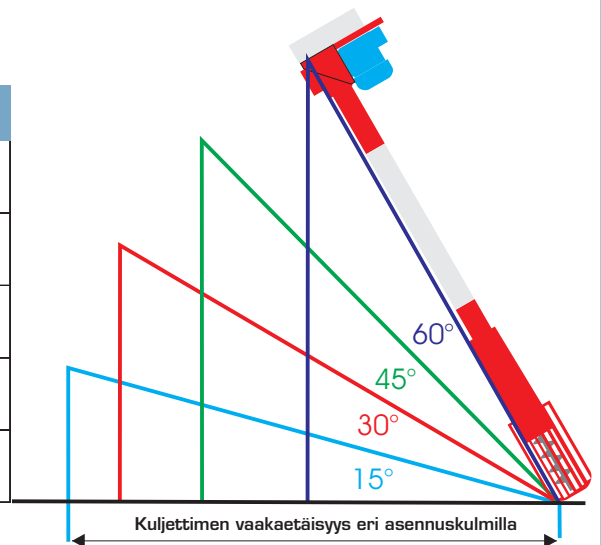
It is also possible to mount small pneumatic wheels under the input end of the auger.



The length of the conveyor, m	The height of the outlet end with different angles			
	15°	30°	45°	60°
5	1,29m	2,50m	3,54m	4,33m
7	1,81m	3,50m	4,95m	6,06m
10	2,59m	5,00m	7,07m	8,66m
12	3,11m	6,00m	8,49m	10,39m



The length of the conveyor, m	Horizontal distance of an auger with different angles			
	15°	30°	45°	60°
5	4,83m	4,33m	3,54m	2,50m
7	6,76m	6,06m	4,95m	3,50m
10	9,66m	8,66m	7,07m	5,00m
12	11,59m	10,39m	8,49m	6,00m



The transport efficiency

	Horizontal position	Inclination of 60 degrees
Tuhti 4"	16t/h	12t/h
Tuhti 5"	25t/h	16t/h
Tuhti 6"	40t/h	25t/h

At the angles exceeding 60 degrees, the transport efficiency decreases rapidly.

Laakson Metalli Oy

FIN-60800 Ilmajoki
Finland

www.laaksonmetalli.fi
tel.+358 - 6 - 424 1800
fax.+358 - 6 - 424 1801
e-mail: lame@laaksonmetalli.fi

Right to changes reserved